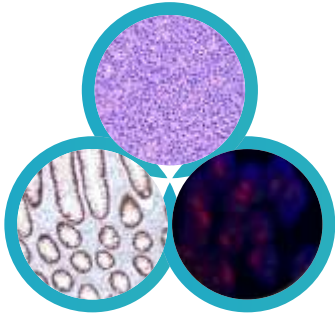


## End To End Solution For **Histology To Molecular**

PathnSitu Solutions deliver a seamless journey from histology to molecular, ensuring a comprehensive approach for your laboratory requirements

---



# QR LABEL PRINTING **APPLICATION**

Revolutionizing  
Laboratory Label Printing



**SPECIMEN LABEL**



**BLOCK LABEL**



**SLIDE LABEL**

Introducing Our QR Label Printing  
Software - Simplify Specimen, block,  
and slide printing with swift QR code  
generation from user inputs.



# HISTOLOGY EQUIPMENT

**Flexigross - Grossing Station**



**Formalin Monitor**



**Vacuum Tissue Processor**



**Embedding Center**



**Manual Microtome**



**Fully Automated Microtome**



**Water Bath**



**Slide Dryer**



**ChromePath**



**Automated H&E and PAP Stainer**

# IHC AUTOMATION

## Caliber30-Fully Automated IHC Staining System



Fully Automated IHC Staining System

On Board Antigen Retrieval with Proven Technology

On-Board DAB Mixing

End to End Process-Baking to Counterstain

Full Slide Coverage with 120ul

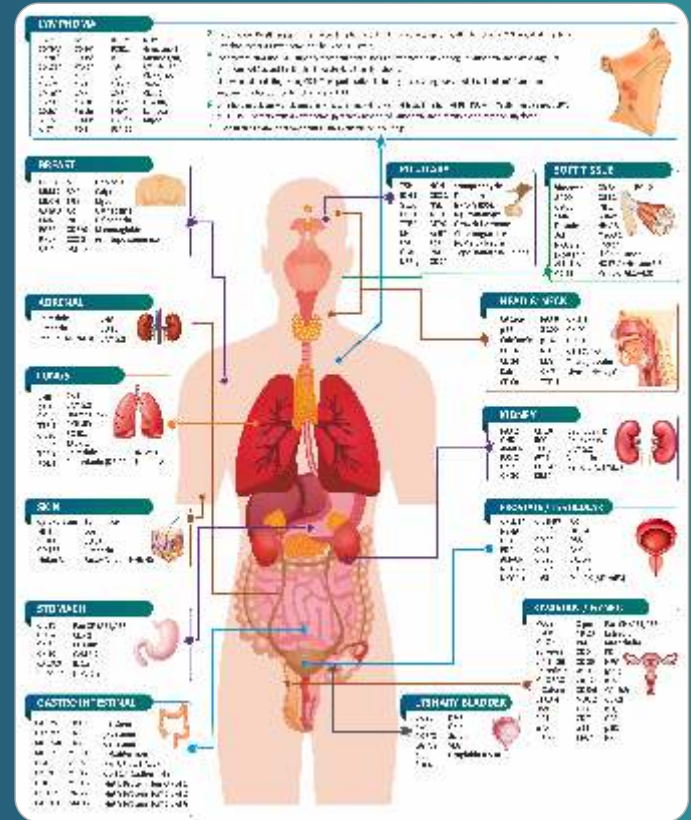
Elegant Look

User Friendly Software

Additional Storage Cabinet

Single Computer can be Connected to 5 Instruments

## Primary Antibodies



# DIGITAL SLIDE SCANNING SYSTEM

## THE FUTURE OF PATHOLOGY



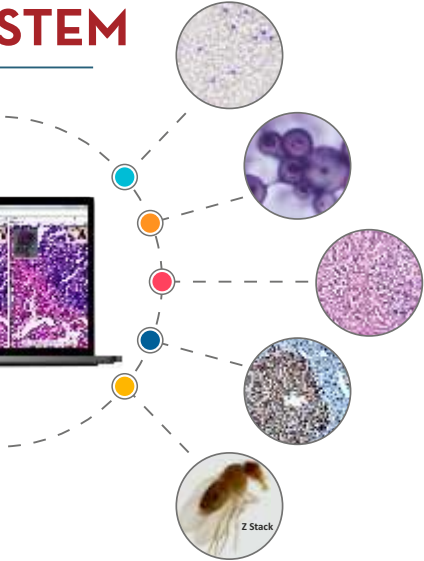
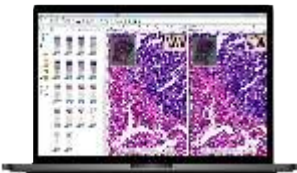
**EasyScan One**  
Single slide Scanner



**EasyScan Pro**  
Six Slide Capacity Scanner



**EasyScan Infinity**  
Upto 60, 100 & 300 Slide Capacity



### ADVANCED MICROSCOPES



Panthera S

### BASIC SERIES MICROSCOPES



BA 310 E Series

### INVERTED MICROSCOPES



AE31 Series

### FISH APPLICATION



PA53

### STEREO MICROSCOPES



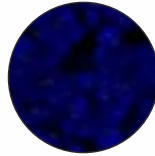
SMZ-171

# MOLECULAR FISH ANALYSIS

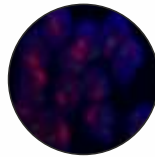
Fluorescence insitu hybridization (FISH) is a test that “Maps” the genetic material in cells. This test can be used to visualize specific genes or portions of genes.



**Denaturation and Hybridization System**



**HER2 in Primary Breast Tumor**

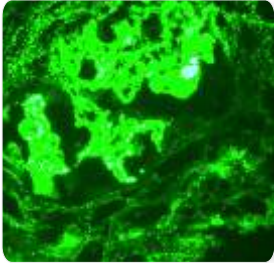


**EGFR in Lung Cancer**

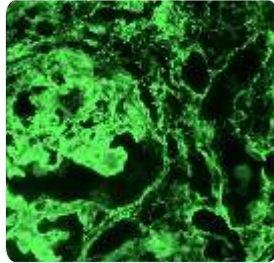


**PA 53**

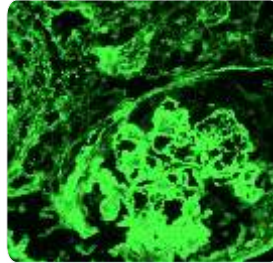
# IMMUNOFLUORESCENCE ANTIBODIES



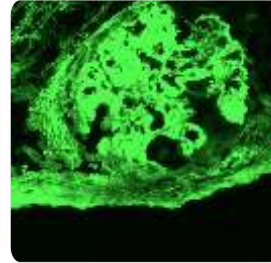
Complement  
Component 3c (C3c)



Kappa



Immunoglobulin G  
(IgG)

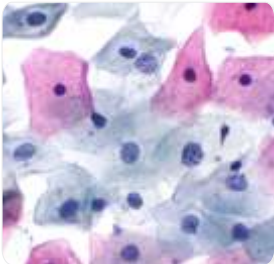


Lambda

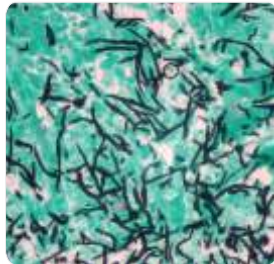
SCAN FOR MORE DETAILS



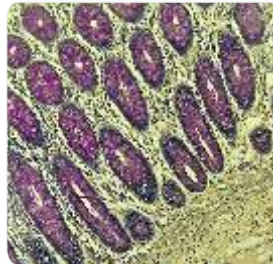
## SPECIAL STAINS



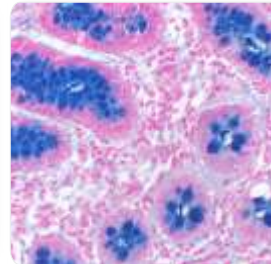
Papanicolaou (PAP)



GMS

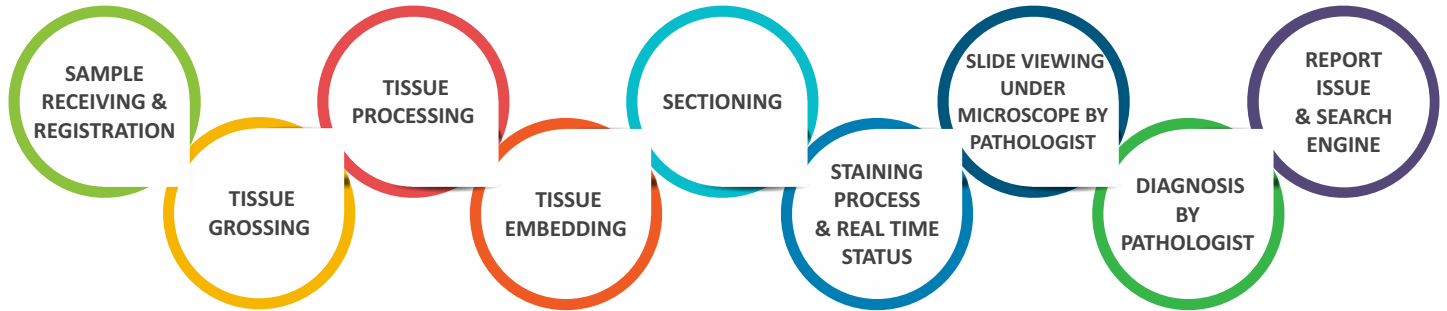


Mucicarmine



Alcian Blue

# SOFTWARE FOR TISSUE PATHOLOGY PROCESS



Looking for Workflow Software, Contact Us - [info@pathnsitu.com](mailto:info@pathnsitu.com)

## CONTACT US

- 📍 **USA** : 7026 Koll Center Parkway, STE#211, Pleasanton, CA 94566, USA. ☎️ +1 925-218-6939
- 📍 **Canada** : 30 Bertrand Ave, Unit B209, Scarborough , Ontario - Zip - M1L 2P5, Canada. ☎️ +1 437-269-3912
- 📍 **India** : PS Heights, Road#15 Nacharam IDA, Hyderabad-500 076, Telangana. ☎️ 040-2701-5533 /5544
- ✉️ [info@pathnsitu.com](mailto:info@pathnsitu.com) | [customerservice@pathnsitu.com](mailto:customerservice@pathnsitu.com)
- 🌐 [www.pathnsitu.com](http://www.pathnsitu.com)

