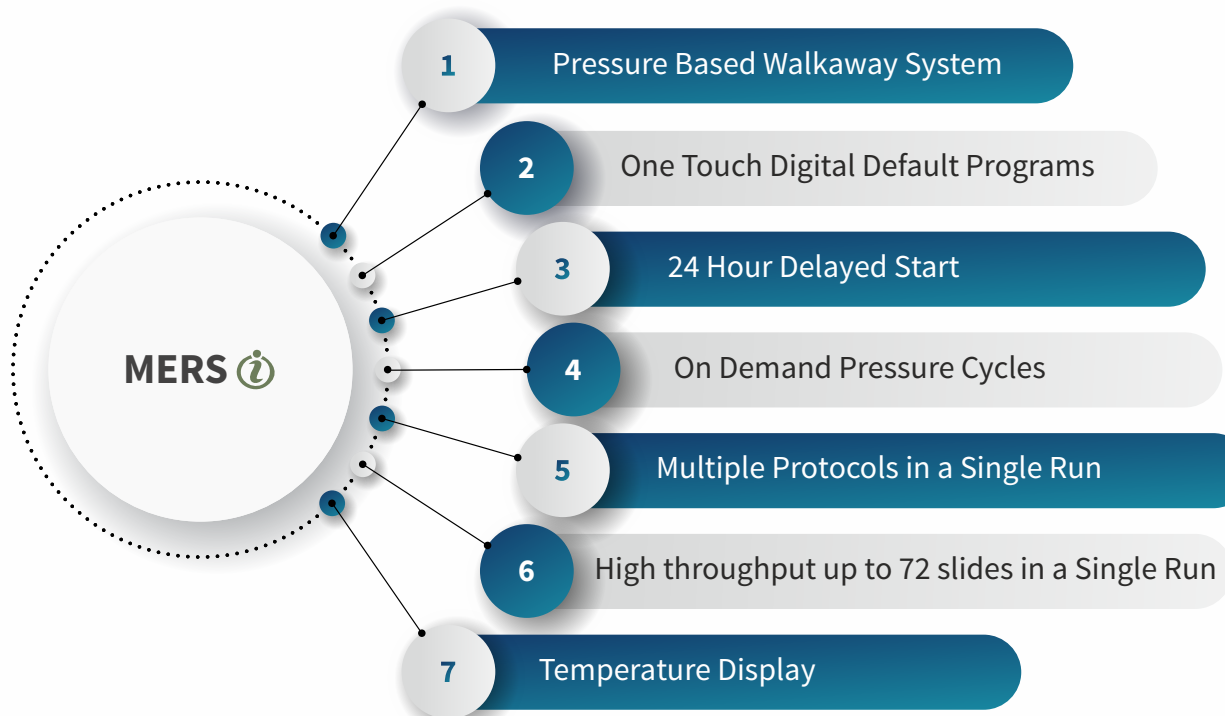


MULTI EPITOPE RETRIEVAL SYSTEM

For Laboratory Use



Multi Epitope Retrieval System is designed to perform optimal antigen retrieval triggered by heat under pressure. The customized one touch retrieval programs are validated in house for Immunohistochemistry (IHC). It has unique features like Delayed Start, Temperature Display and Digital Count down. User safety is our top priority and MERS is designed with double protection technology to ensure safe release of excess pressure. The built-in fully digital default programs in MERS makes it a revolutionary walkaway system with feature highlighting the On Demand Pressure cycle for your tenacious antibodies for diagnostics or research. The optimal temperature and pressure fasten the antigen retrieval process and yields consistent staining.

SPECIFICATIONS

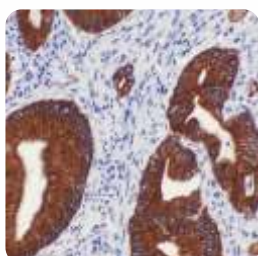
Voltage	: 220-230V AC, 50-60Hz
Power Consumption	: 900W
Dimensions (in inches)	: 15(L) × 8.5(W) × 10.5(H)
Gross Weight(approx)	: 6.20 Kg

ORDERING INFORMATION

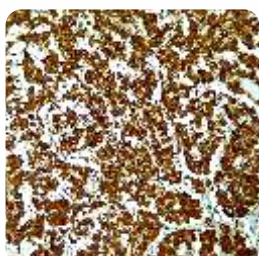
Description	Catalog
MERS	: MERS i
Staining Jars	: SJ001
Slide Rack	: SR001
Stand	: ST001

AUXILIARY PRODUCTS

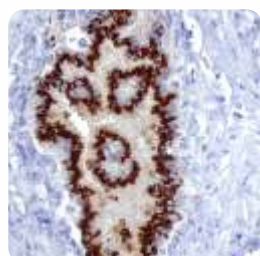
Description	Catalog
Citrate Buffer	: PS007
EDTA Buffer	: PS008
Tris - EDTA Buffer	: PS009



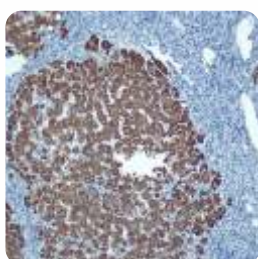
Colon Ca stained with CKAE1/AE3



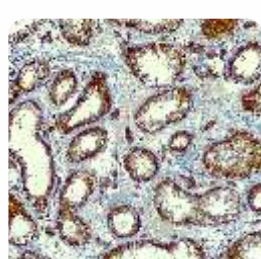
Pituitary stained with ACTH



Benign Prostate Hyperplasia stained with Prostein



Liver stained with Hep Par-1



Testis stained with Inhibin



MERS 

Contact Us

USA

1257, Quarry Ln, Suite150
Pleasanton, CA-94566, USA
Phone: +1 925-218-6939

Doc: PSMK-MERSi/BR/Rev.00

Email

techsupport@pathnsitu.com
customerservice@pathnsitu.com

www.pathnsitu.com

India

PS Heights, 2nd Floor, Plot# A-28/1/11B/B,
Road#15 Nacharam IDA,
Hyderabad-500 076, Telangana.

Phone: 040-2701-5533 /5544

Fax: 040-2701-5544

